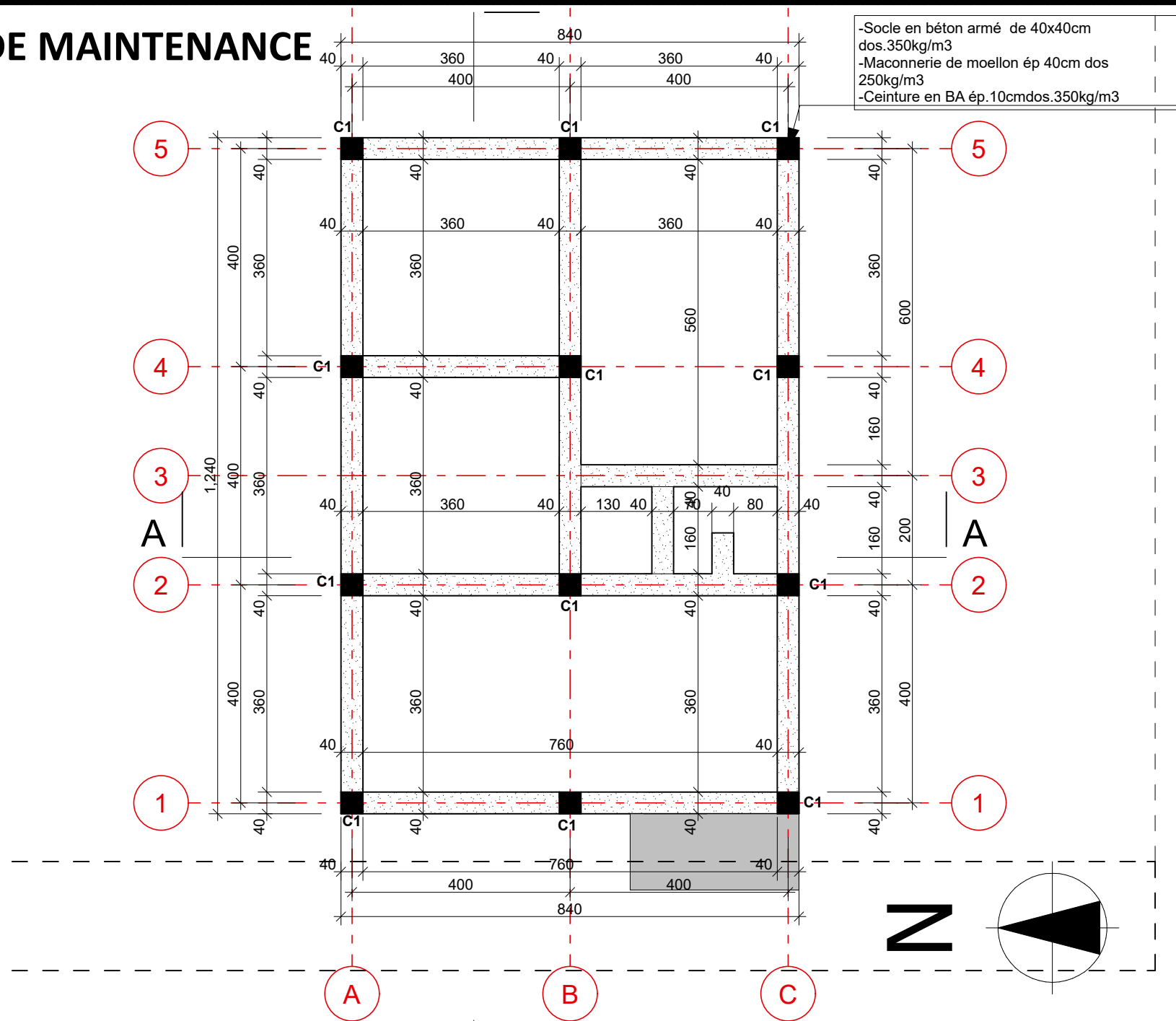


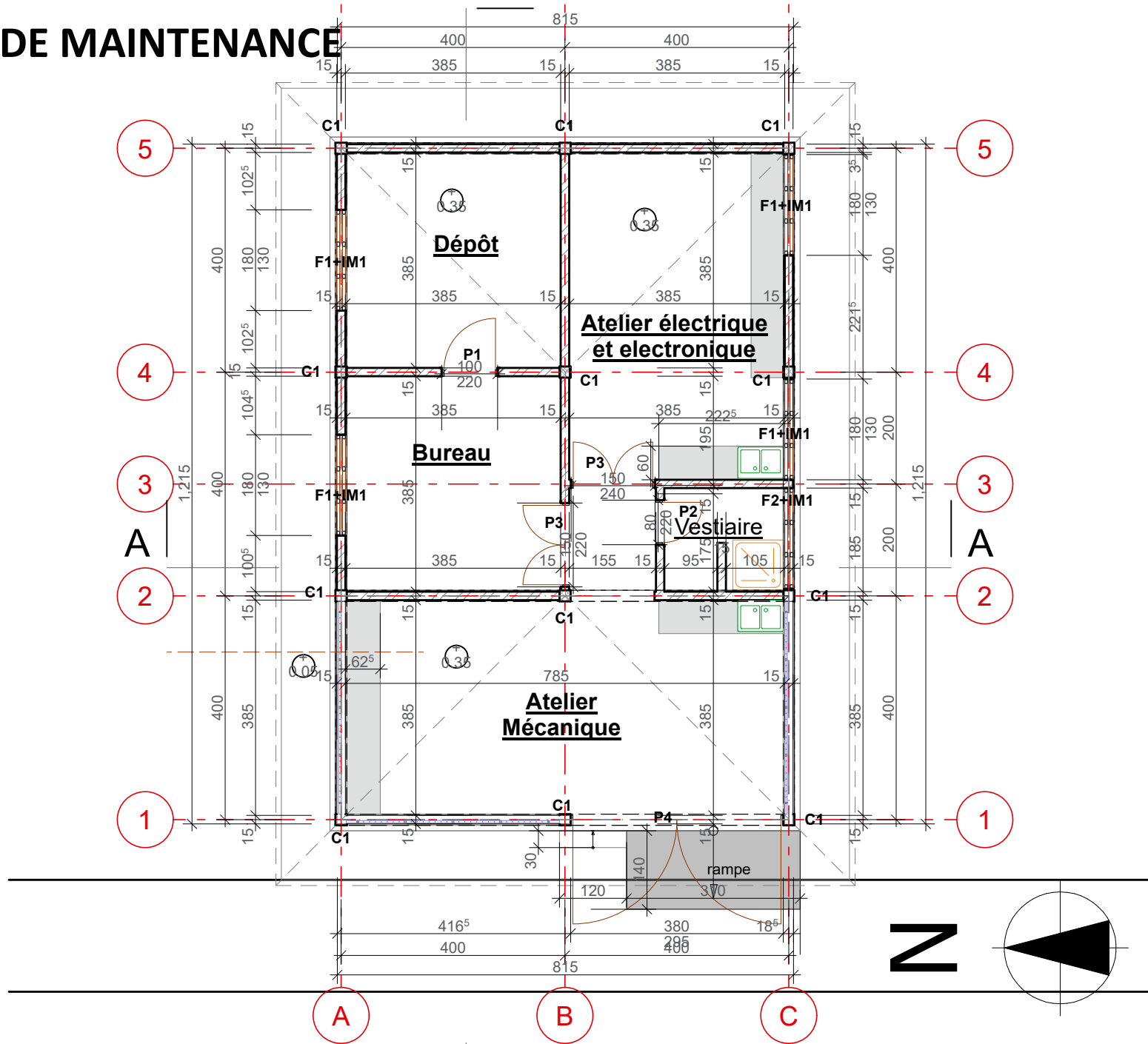
ATELIER DE MAINTENANCE



Plan 02

Plan de fondation

ATELIER DE MAINTENANCE



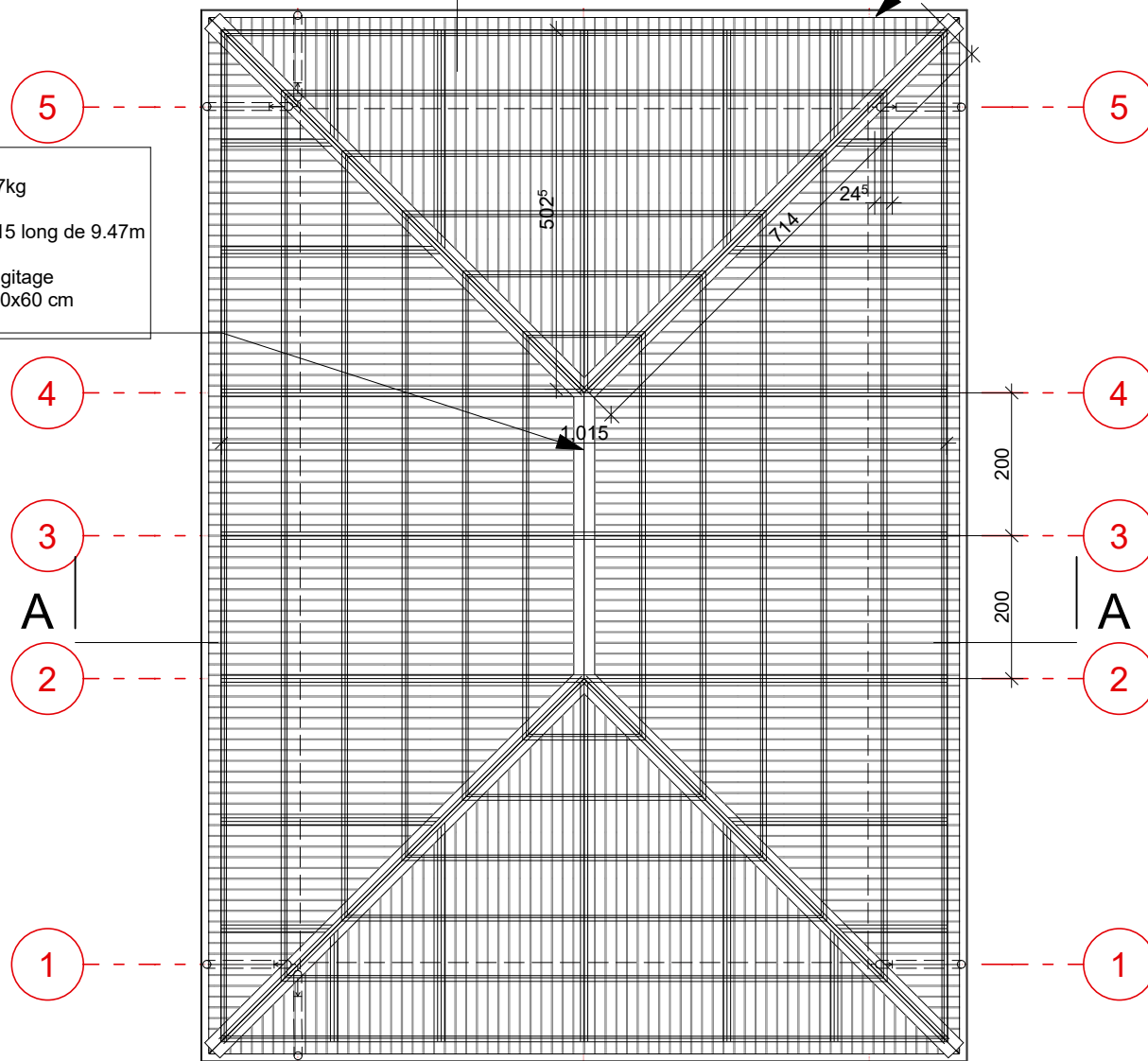
Plan 03

Vue en plan cotée

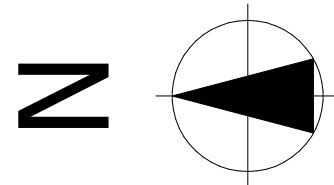
ATELIER DE MAINTENANCE

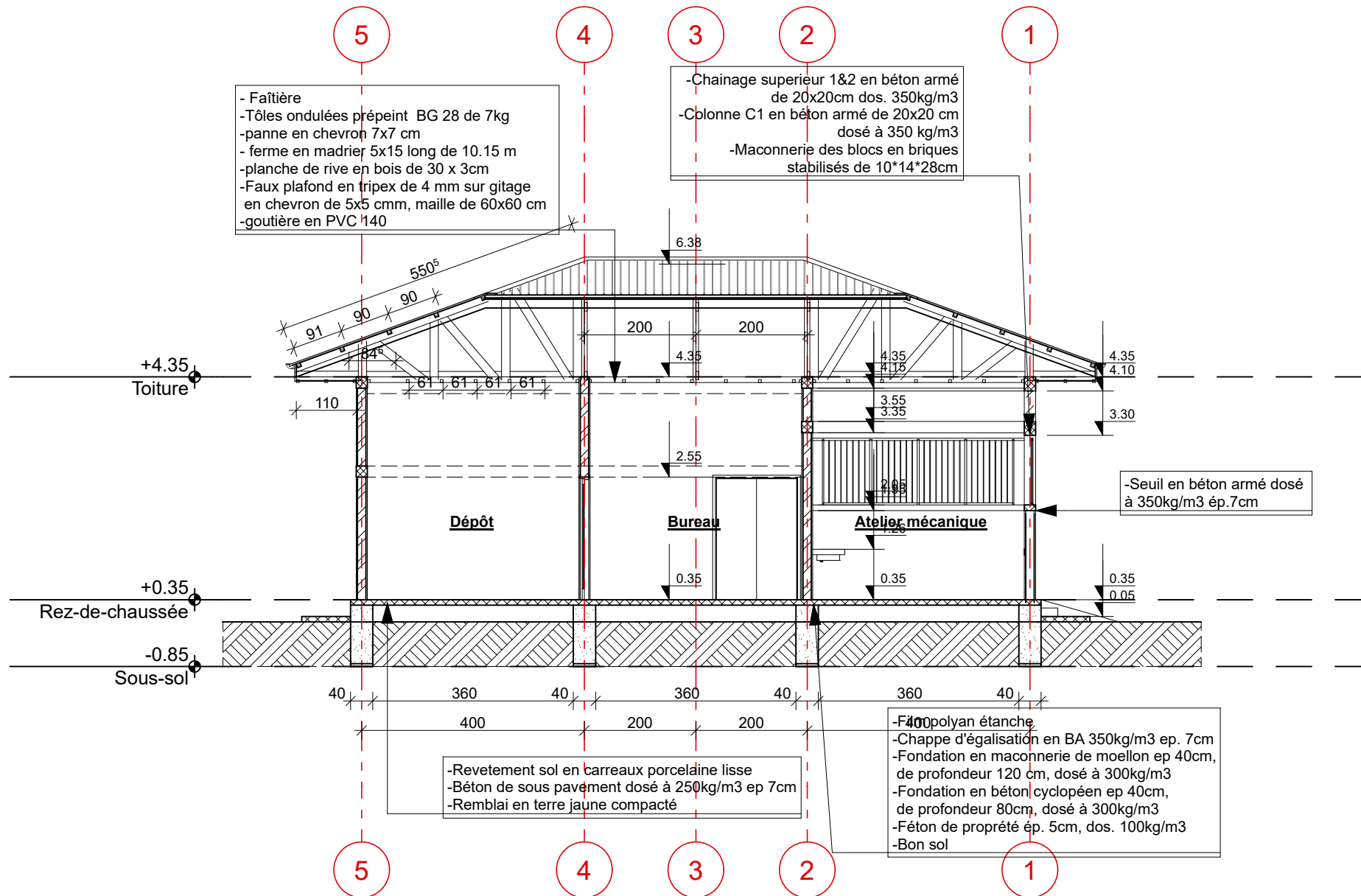
- Faîtière
- Tôles ondulées prépeint BG 28 de 7kg
- panne en chevron 7x7 cm
- ferme et demi-ferme en madrier 5x15 long de 9.47m
- planche de rive en bois de 30 x 3cm
- Faux plafond en tripex de 4 mm sur gitage en chevron de 5x5 cmm, maille de 60x60 cm
- gouttière en PVC 140

- Gouttière en PVC de 140mm
- Descente eau pluviale en PVC
- Planche de rive de 3/30 cm



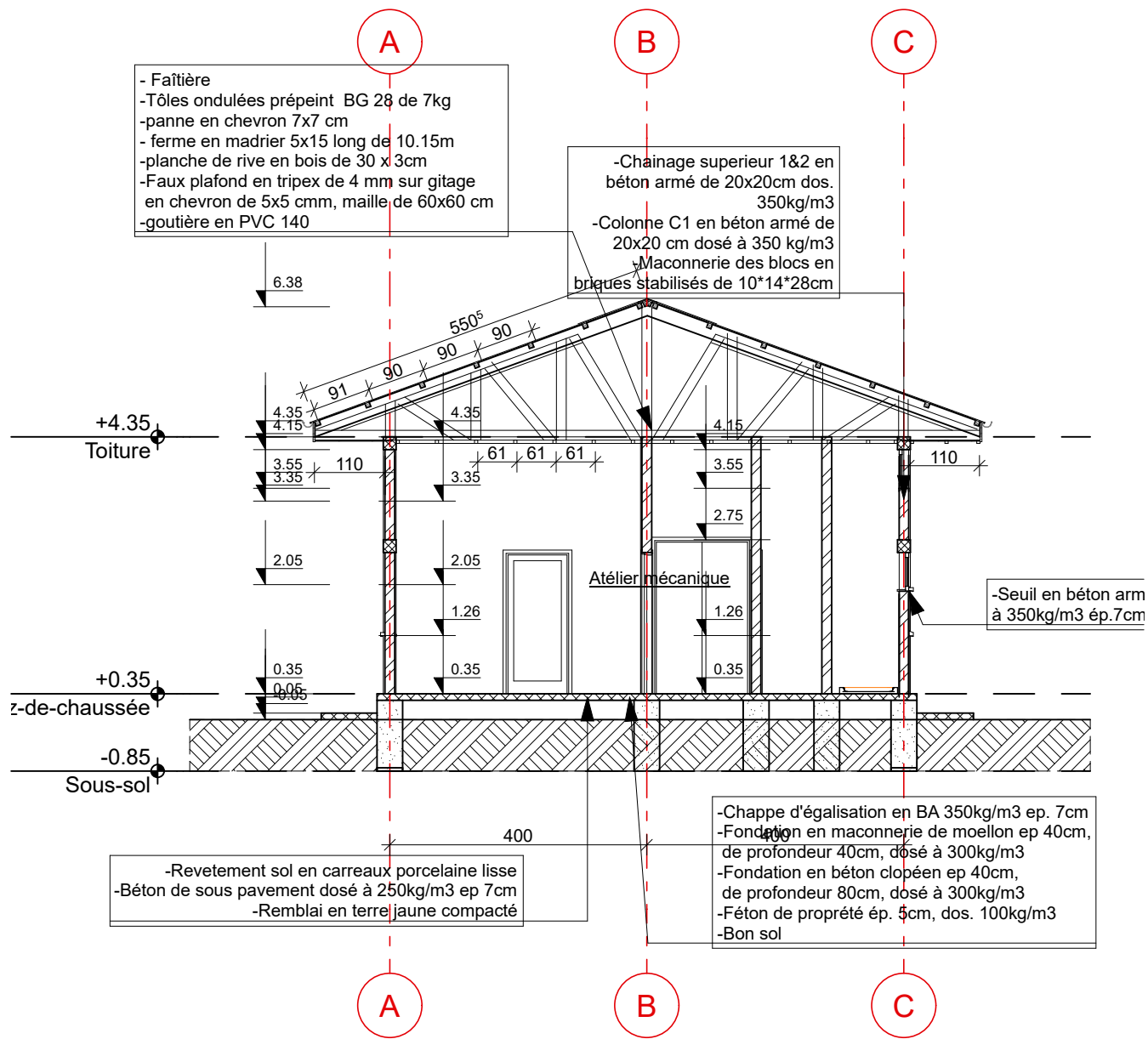
Plan de toiture





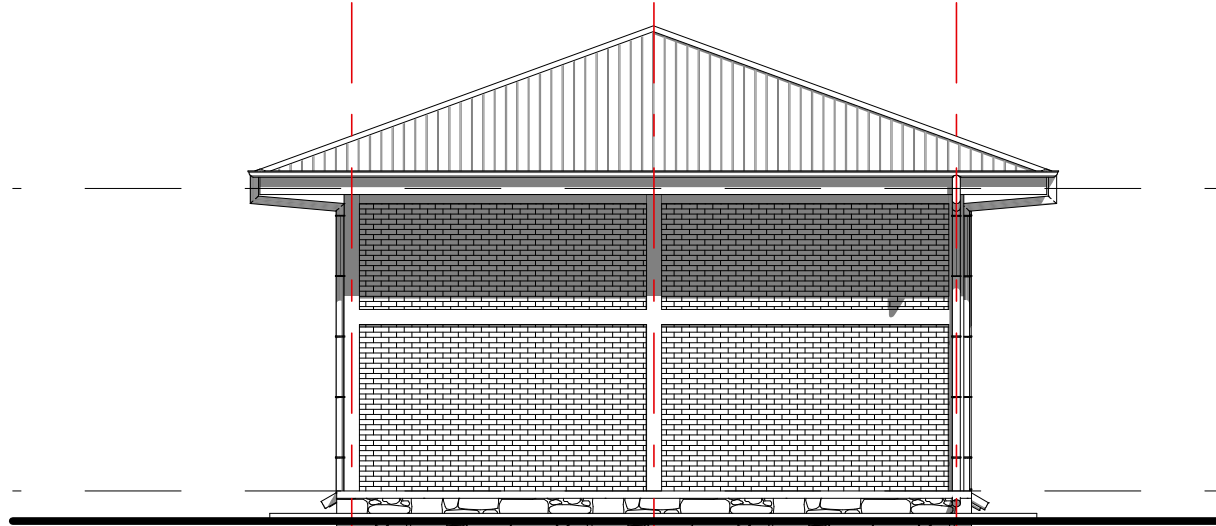
Coupe AA (1)

ATELIER DE MAINTENANCE



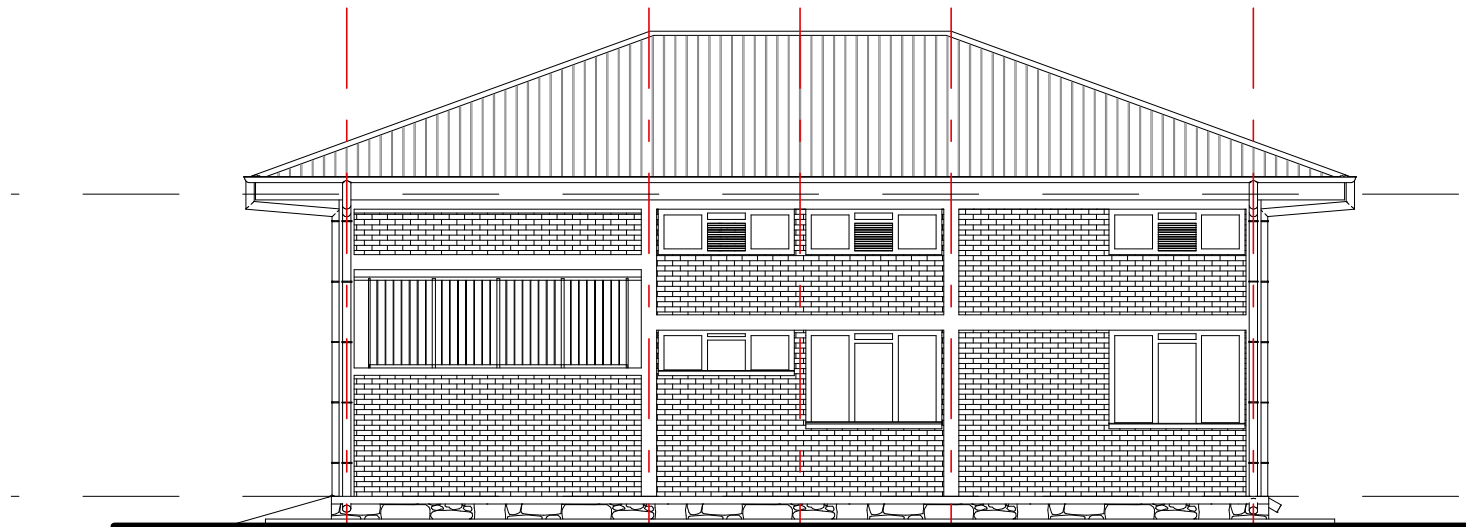
Façade Est (2)

ATELIER DE MAINTENANCE



Façade postérieure

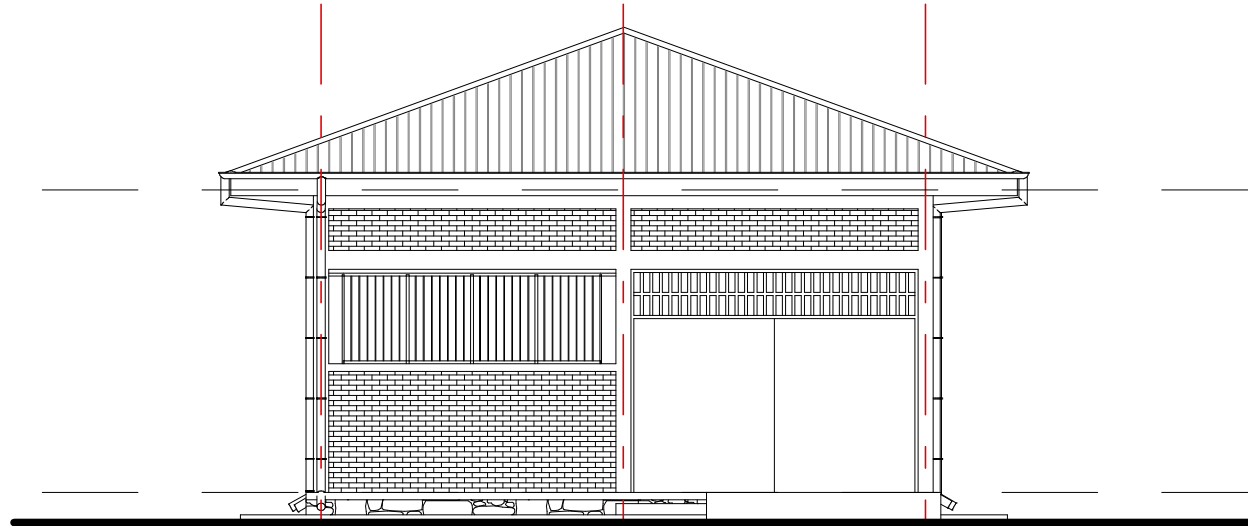
Façade Sud (1)



Façade latérale droite

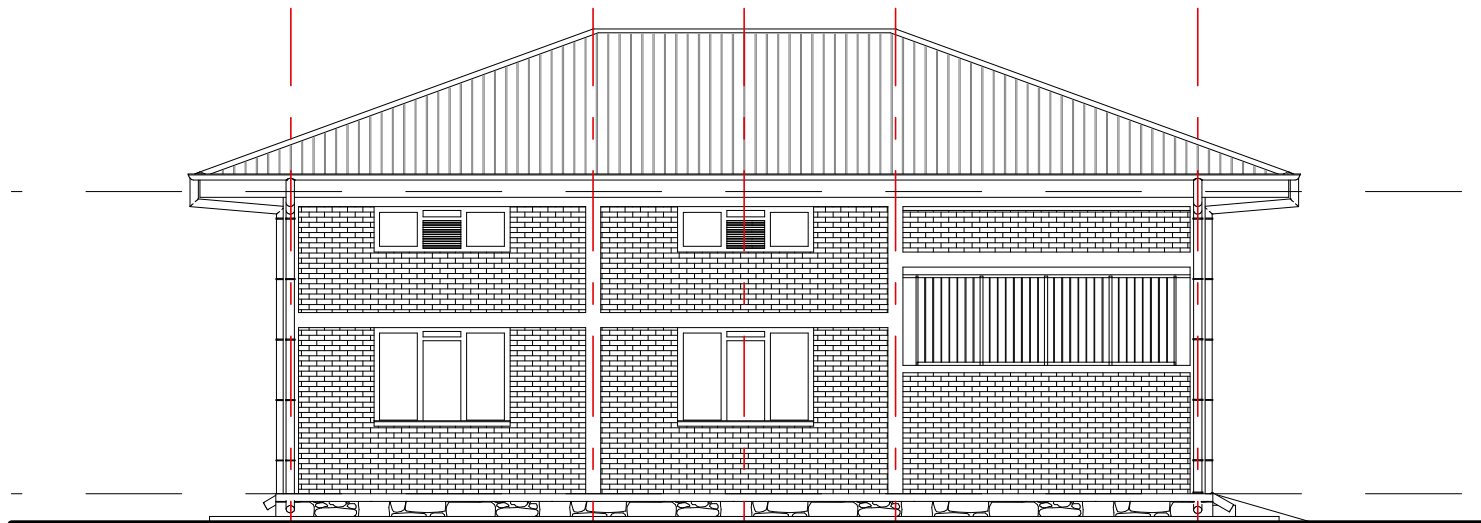
Façade Ouest (1)

ATELIER DE MAINTENANCE



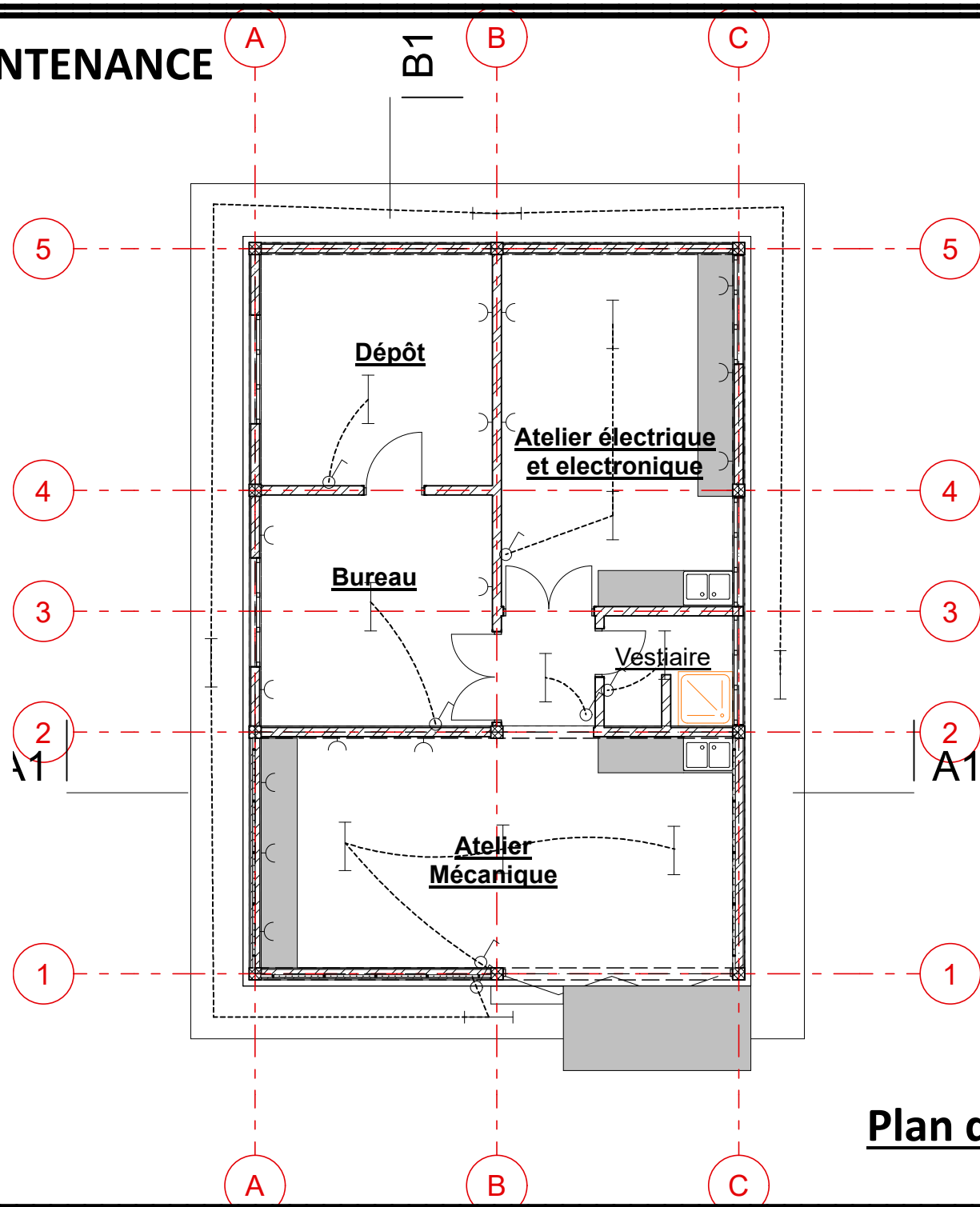
Façade principale

Façade Nord (1)

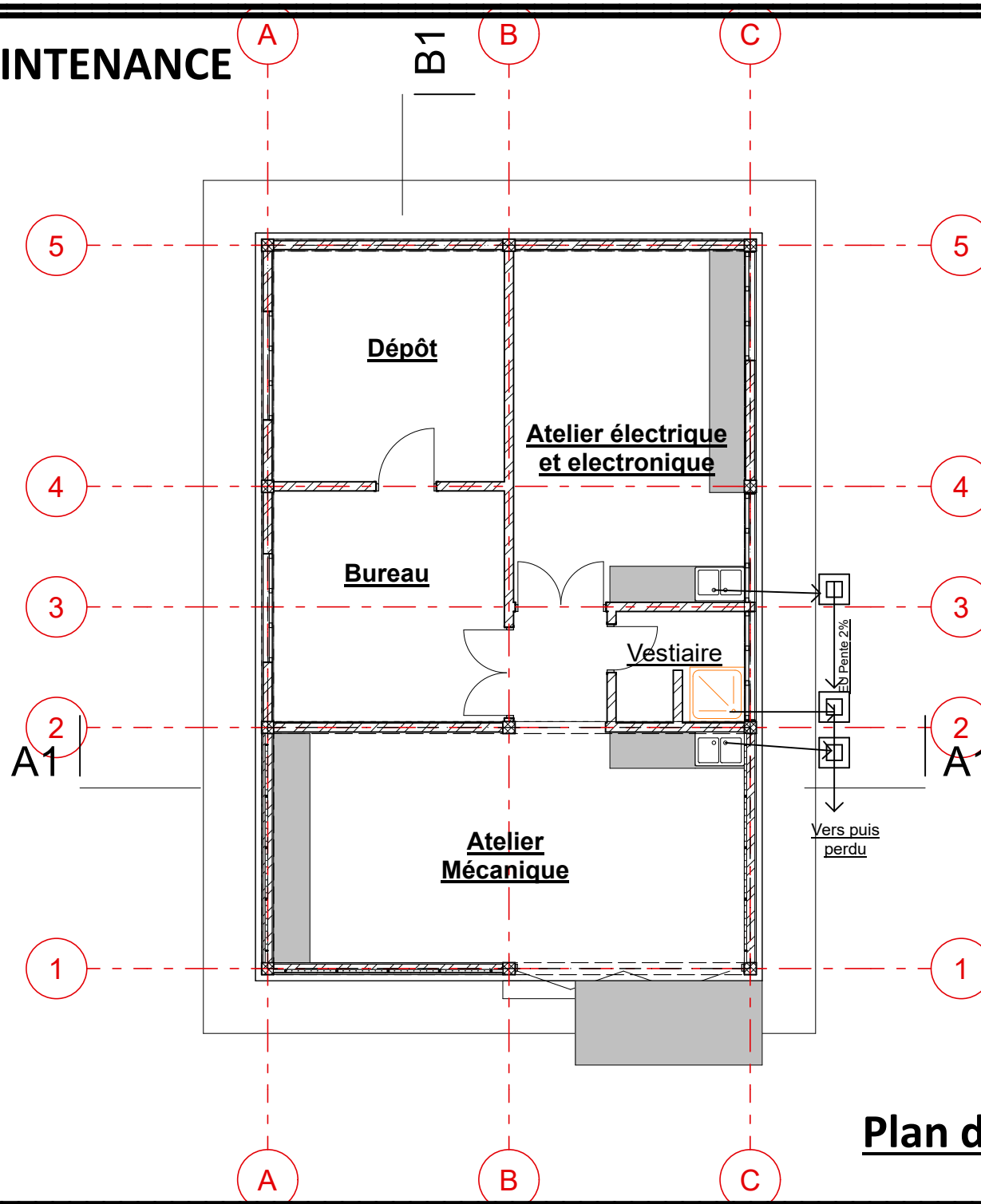


Façada latérale gauche

ATELIER DE MAINTENANCE

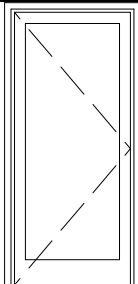


ATELIER DE MAINTENANCE



ATELIER DE MAINTENANCE

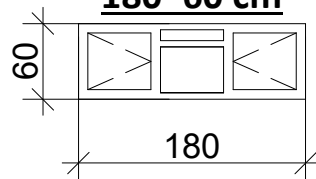
Porte intérieure en bois
massif de 100*220cm



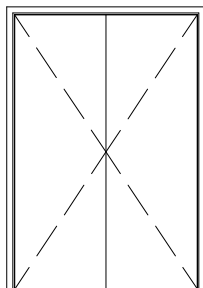
Imposte métallique
de 180*60 cm



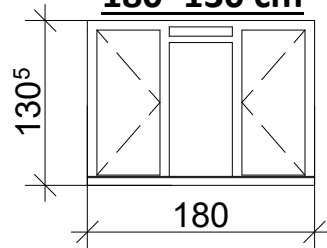
Fenêtre métallique de
180*60 cm



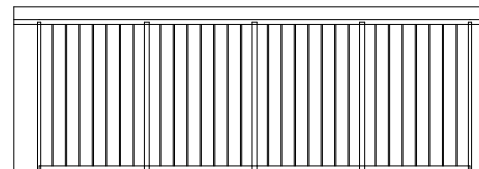
Porte intérieure en bois
massif de 100*220cm



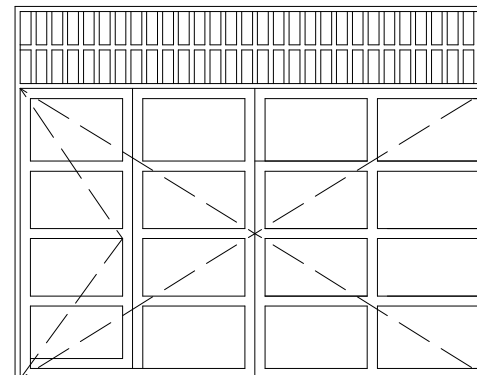
Fenêtre métallique de
180*130 cm



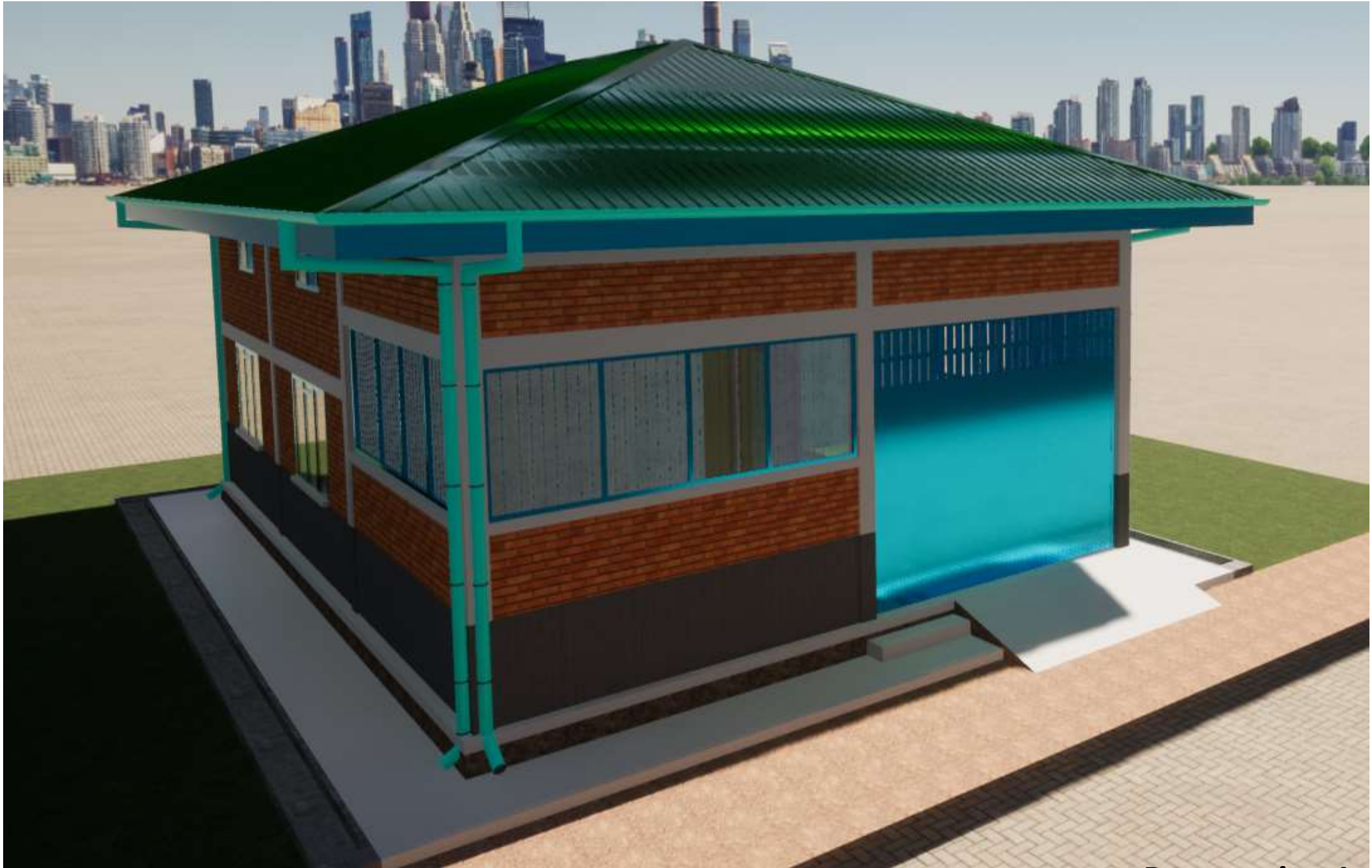
Grille métallique pleine de 130*380cm



Double porte métallique semi-grillagée



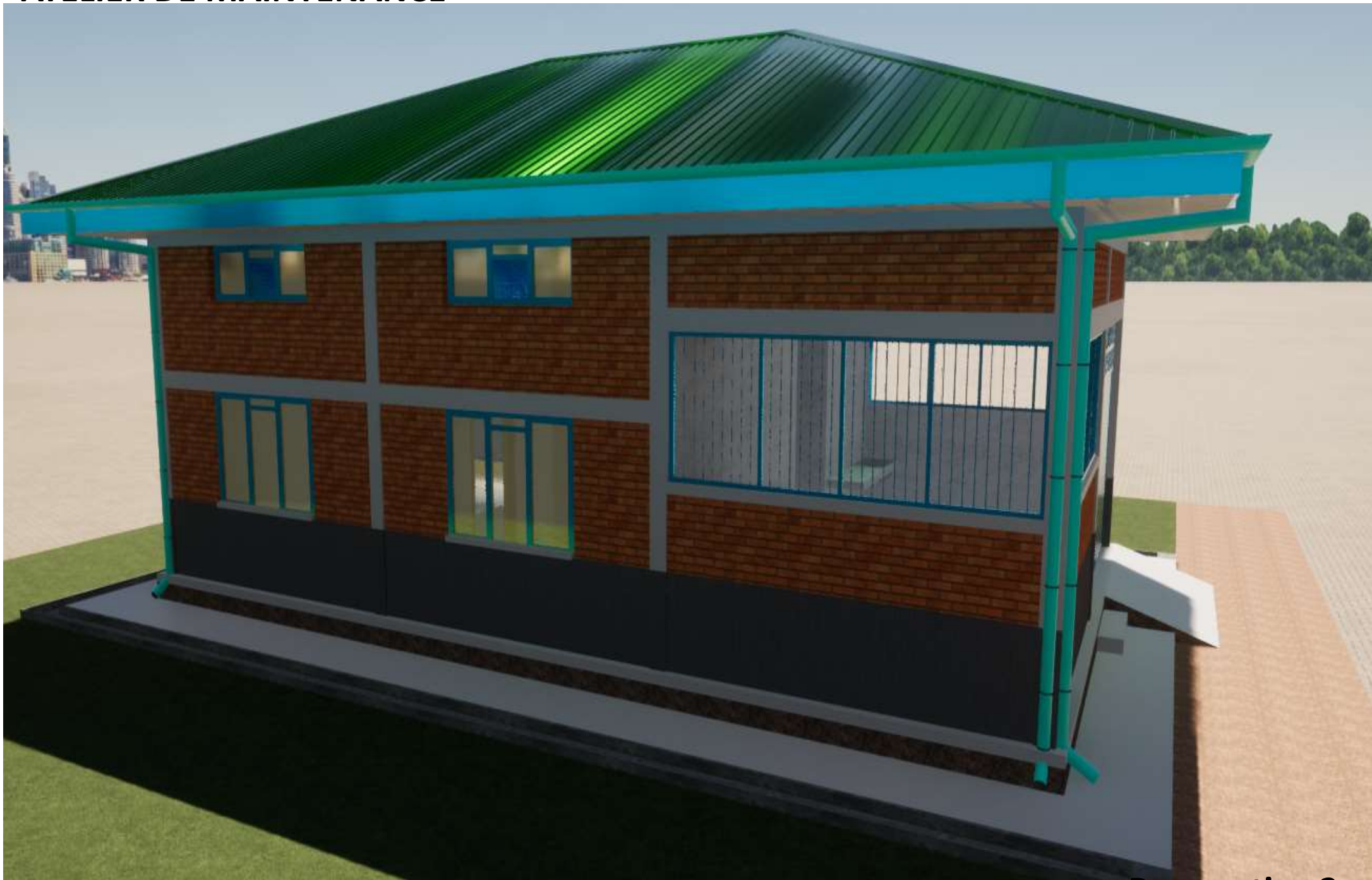
ATELIER DE MAINTENANCE



Plan 11

Perspective 1

ATELIER DE MAINTENANCE



Plan 12

Perspective 3

ATELIER DE MAINTENANCE



Plan 12

Perspective 3

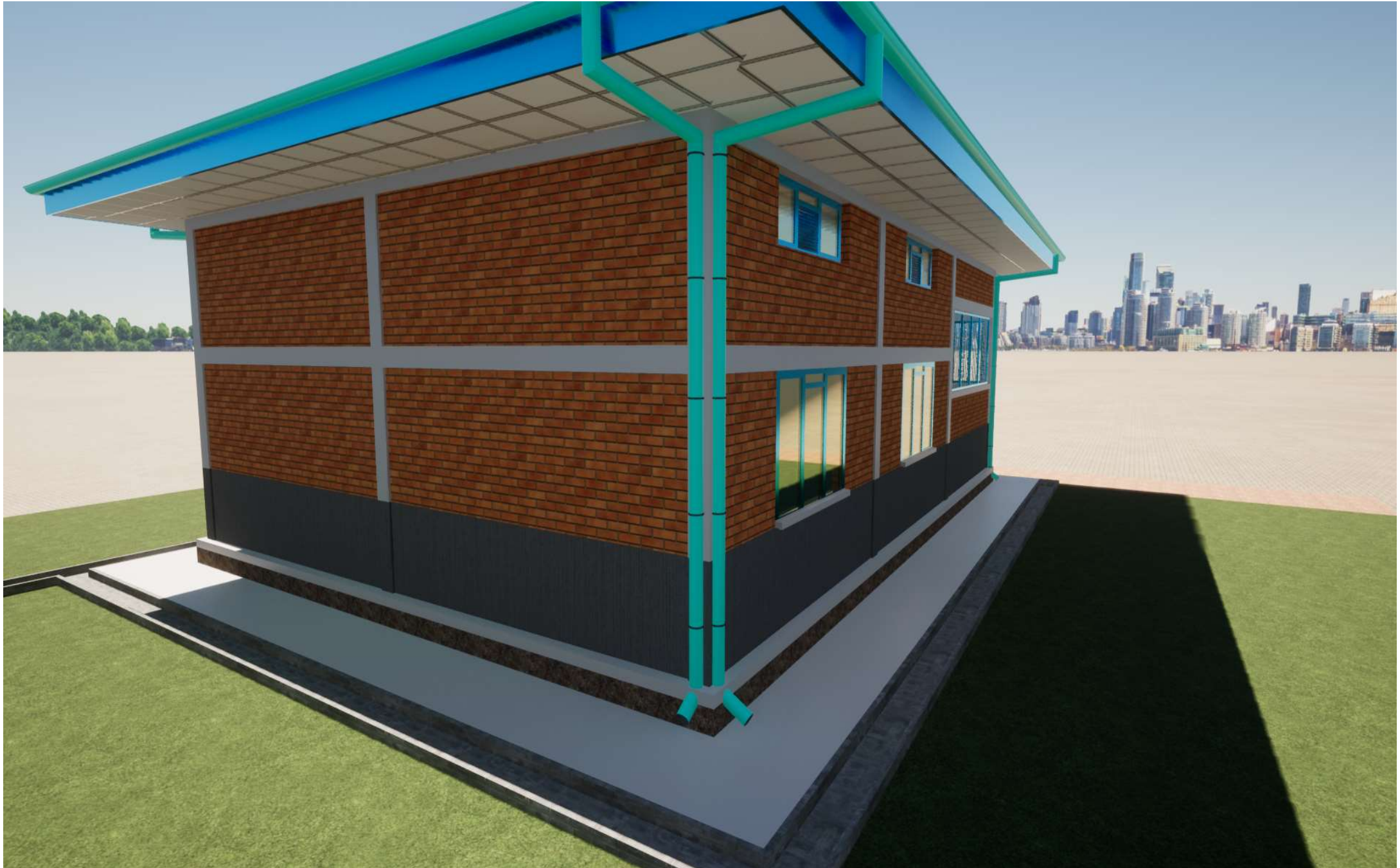
ATELIER DE MAINTENANCE



Plan 14

Perspective 4

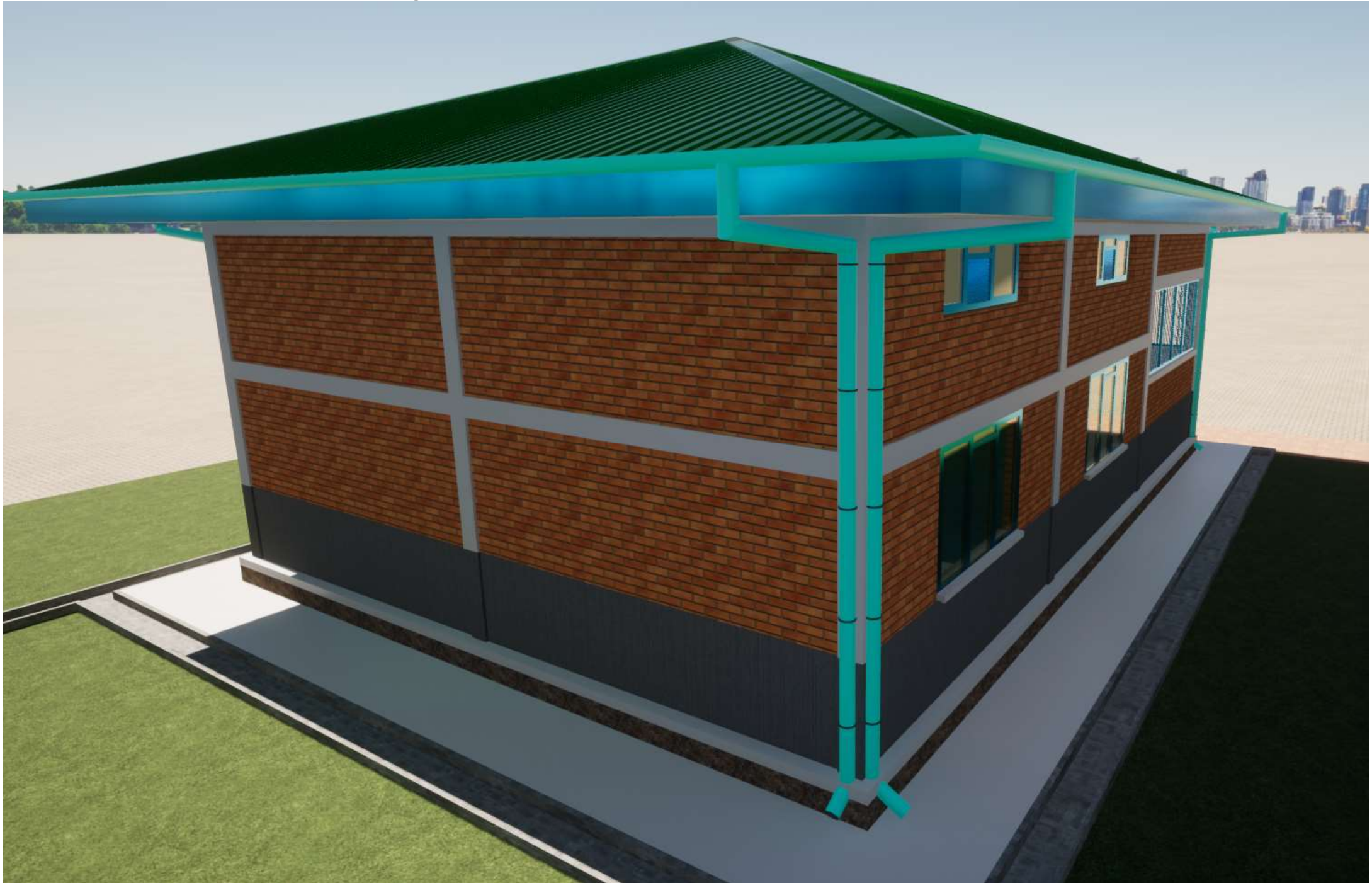
ATELIER DE MAINTENANCE



Plan 15

Perspective 5

ATELIER DE MAINTENANCE



Plan 16

Perspective 6

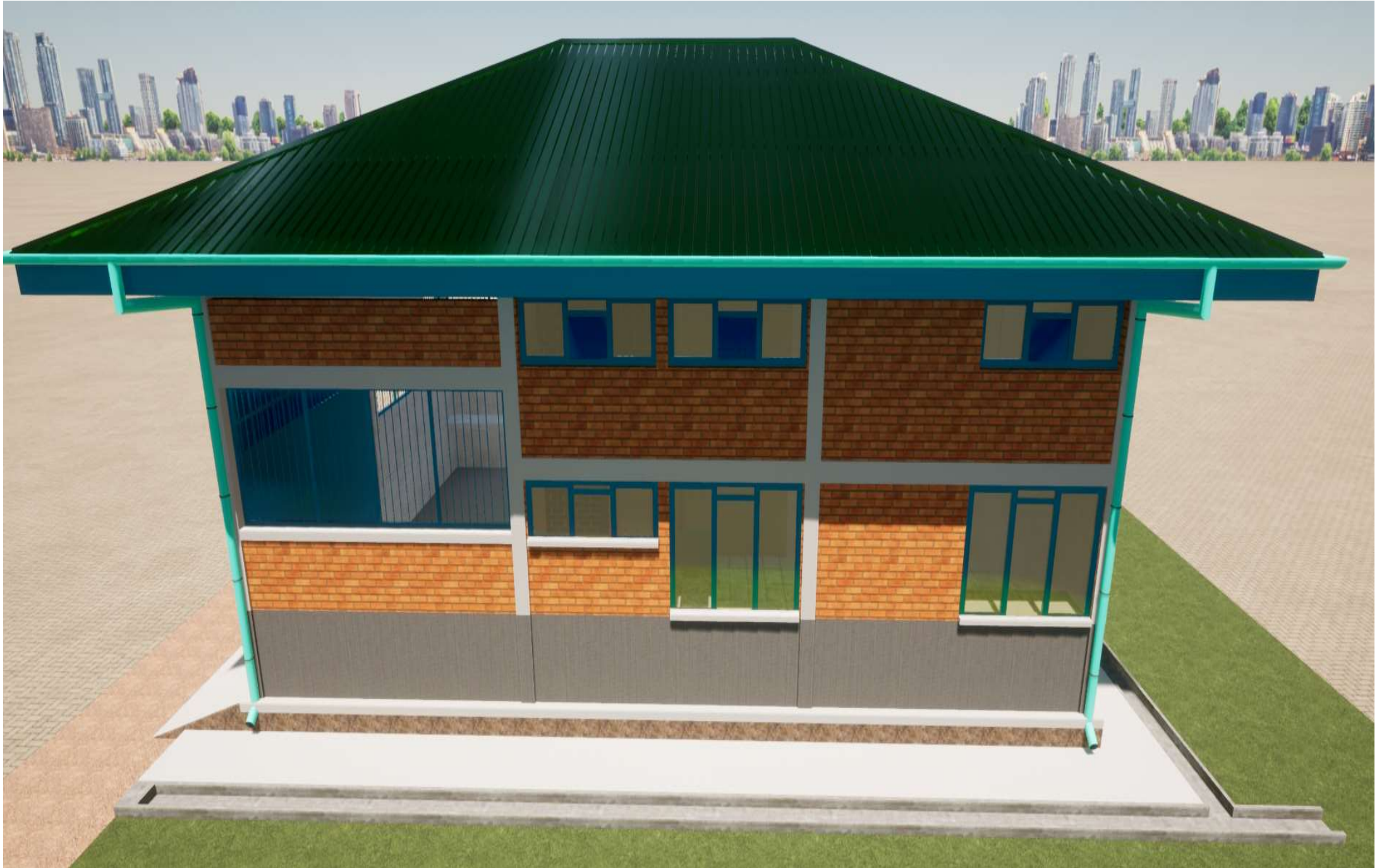
ATELIER DE MAINTENANCE



Plan 17

Perspective 7

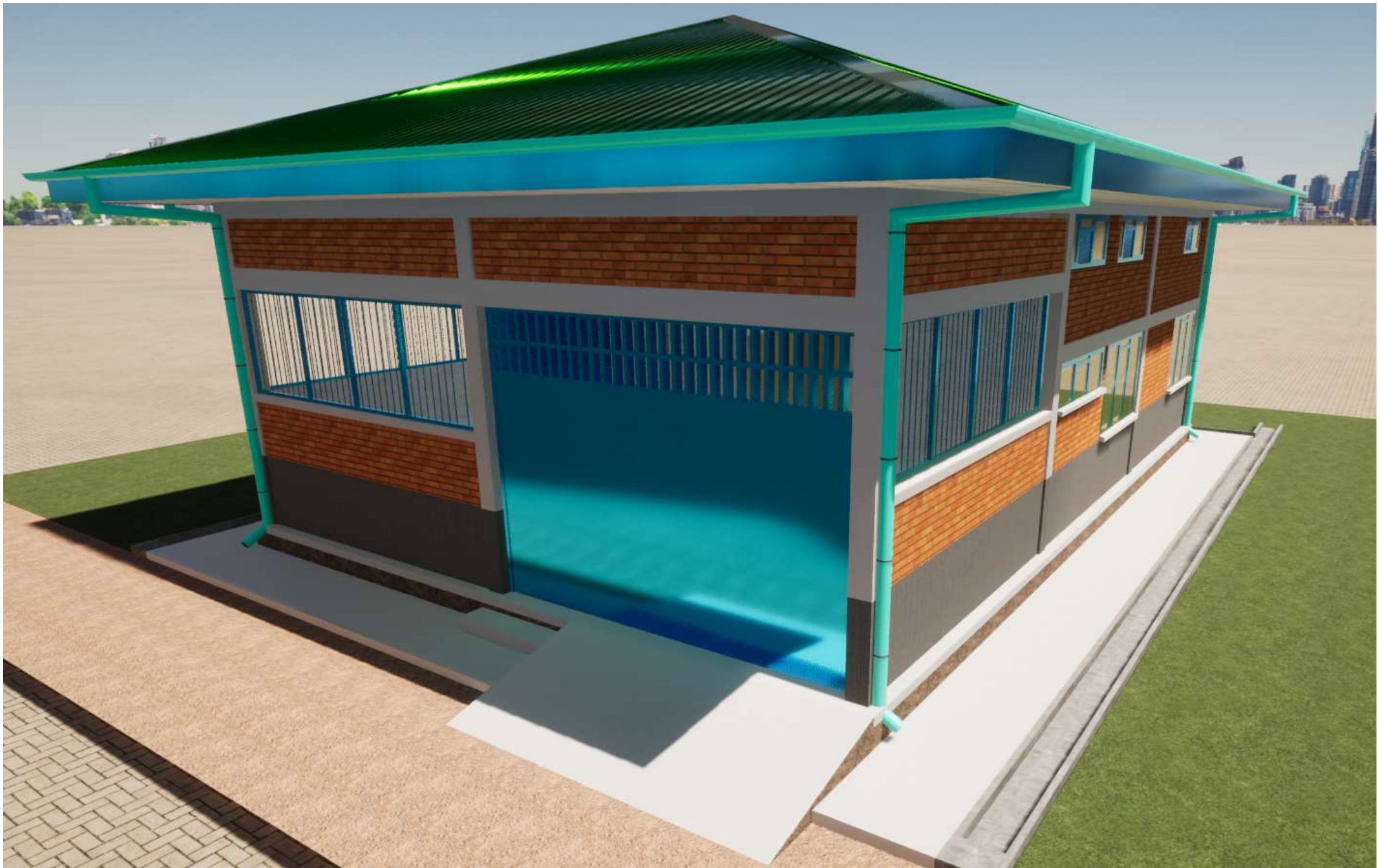
ATELIER DE MAINTENANCE



Plan 18

Perspective 8

ATELIER DE MAINTENANCE



Plan 19

Perspective 10